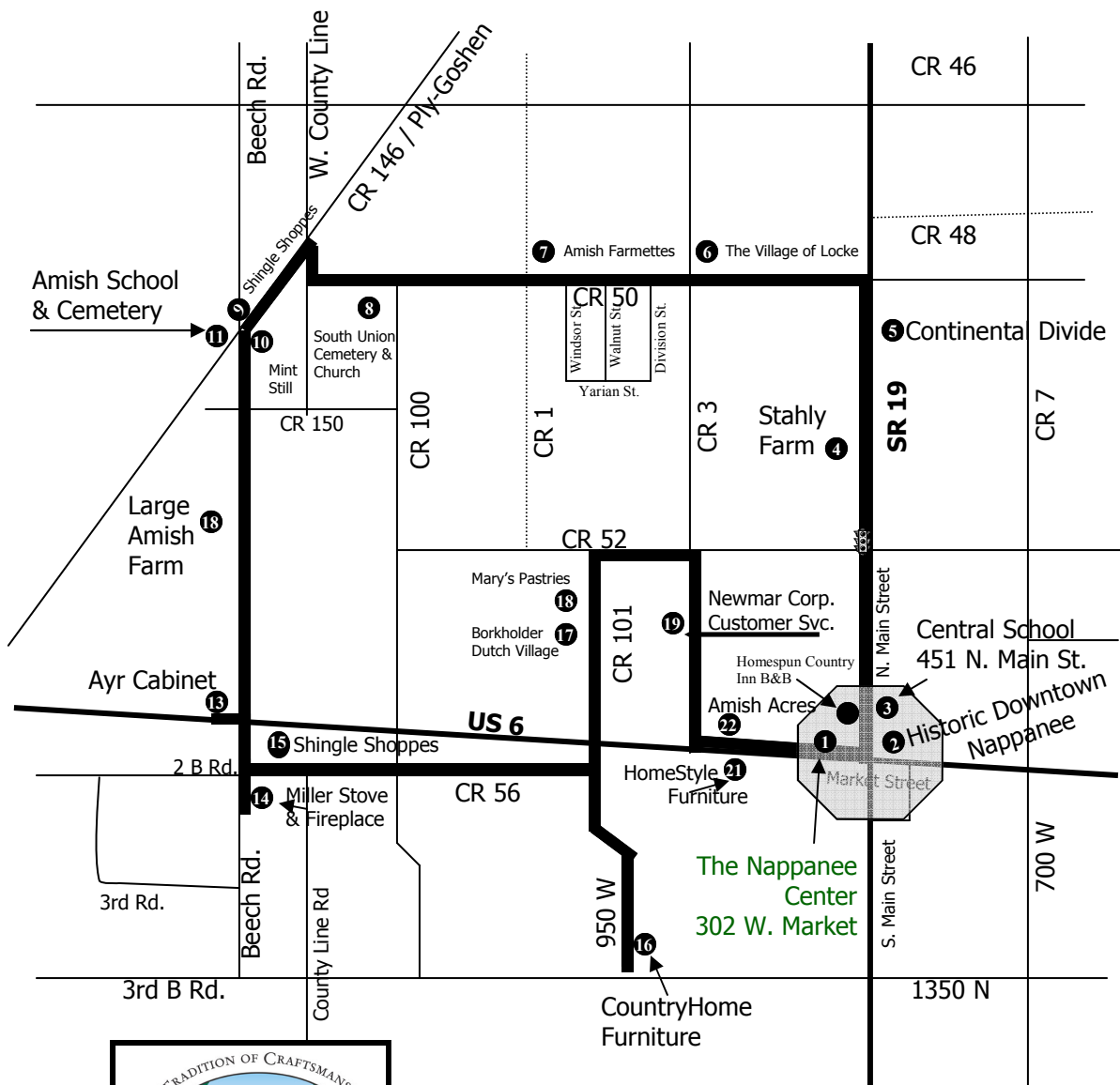


THE LOCKE TOWN LOOP (A DRIVE IN THE COUNTRY)



EMBRACE THE PACE OF A SUNDAY DRIVE ANY DAY OF THE WEEK ON THE 16 MILE LOCKE TOWN LOOP DRIVING TOUR.

AMISH AND ENGLISH FARMSTEADS INTERTWINE THROUGHOUT THE COUNTRYSIDE.

NEED A CHALLENGE? TRY COUNTING THE AMISH TELEPHONE BOOTHS ALONG THE WAY OR FINDING THE OLDEST CIVIL WAR TOMBSTONE AT SOUTH UNION CEMETERY.



WE DO ASK THAT YOU CARRY ON THE TRADITION OF MUTUAL RESPECT FOUND BETWEEN AMISH AND NON-AMISH FRIENDS AND NEIGHBORS BY KEEPING IN MIND THE FOLLOWING GUIDELINES.

- FOR RELIGIOUS REASONS, MOST AMISH PEOPLE CHOOSE TO ABSTAIN FROM BEING PHOTOGRAPHED. TO BE RESPECTFUL OF THIS BELIEF, WE ASK THAT YOU DO NOT ATTEMPT TO TAKE ANY PICTURES OF THE AMISH, WHETHER POSED OR UNPOSED.
- BE MINDFUL OF SHARING THE ROAD WITH AMISH BUGGIES. ALWAYS ALLOW MORE SPACE THAN YOU THINK BETWEEN YOUR CAR AND THE BUGGY. TO AVOID SPOOKING THE HORSE, REFRAIN FROM USING YOUR HORN. WHEN TRAFFIC ALLOWS, YOU MAY PASS THE HORSE AND BUGGY CAREFULLY, BUT NEVER TRY TO PASS ON A HILL OR CURVE.
- ALONG YOUR TRIP, YOU WILL COME ACROSS SEVERAL DIFFERENT AMISH-OWNED HOME BUSINESSES. FEEL FREE TO STOP AND BROWSE AT THESE "SHINGLE SHOPPES"; HOWEVER, IF THERE IS NOT SIGN SIGNIFYING SUCH A BUSINESS, YOU MUST RESPECT THE PRIVACY OF THE RESIDENTS.
- KEEP CAREFUL WATCH FOR PEDESTRIANS AND BIKERS, WHICH ARE COMMONLY FOUND ON COUNTRY ROADS. MOST IMPORTANTLY, DON'T FORGET - SLOW DOWN, ENJOY THE RIDE, AND EMBRACE THE PACE!!



Nappanee Area Chamber of Commerce
 302 W. Market Street
 Nappanee, IN 46550
 574-773-7812 Toll Free: 1-877-277-5375
www.nappaneechamber.com

1. THE NAPPANEE CENTER

CHAMBER OF COMMERCE WELCOME
CENTER AND HERITAGE COLLECTION
302 W. MARKET STREET
NAPPANEE IN, 46550
WWW.NAPPANEECHAMBER.COM
574/773-7812 1-877-277-5375

NAPPANEE CENTER HOURS: CHAMBER HOURS:
WEEKDAYS: 9AM-5PM WEEKDAYS: 9AM-5PM
SATURDAYS 9AM-1PM -
SUNDAYS 1PM-5PM -

2. HISTORIC DOWNTOWN NAPPANEE

NAPPANEE WAS FOUNDED IN 1874 AND IS HOME TO MANY RESTAURANTS AND UNIQUE SHOPS. THE HERITAGE OF NAPPANEE IS BUILT ON THE RAILROAD, WOODWORKING AND THE AMISH CULTURE.

3. CENTRAL SCHOOL

CENTRAL SCHOOL IS THE SITE OF NAPPANEE'S FIRST SCHOOL. THE BUILDING IS CURRENTLY THE BOY'S AND GIRL'S CLUB AND ELDER HAUS SENIOR CENTER.

4. STAHLY FARM

LOCATED ACROSS FROM NORTHWOOD HIGH SCHOOL, THIS FARM IS HOME TO A DIRECT DESCENDENT OF HENRY STAHLY, AN ORIGINAL FOUNDER OF NAPPANEE.

5. CONTINENTAL DIVIDE

WATER NORTH OF THIS POINT FLOWS INTO THE GREAT LAKES AND THEN TO THE ATLANTIC OCEAN. WATER SOUTH OF THIS POINT FLOWS INTO THE MISSISSIPPI RIVER AND THEN TO THE GULF OF MEXICO.

6. THE VILLAGE OF LOCKE

LOCKE VILLAGE IS NAMED FOR SAMUEL LOCKWOOD WHO SETTLED IN THE TOWNSHIP IN 1836. THERE WERE THREE DRY GOODS STORES, ONE DRUG STORE, ONE GROCERY STORE, ONE HARDWARE STORE, TWO BOOT AND SHOE SHOPS, TWO SAWMILLS, ONE SHINGLE MILL, ONE WAGON SHOP, ONE STEAM GRIST AND FLOURING MILL, THREE BLACKSMITHS SHOPS, A HOTEL, A PUBLIC SCHOOL, A CHURCH, THREE PHYSICIANS AND ABOUT FORTY DWELLINGS.

7. AMISH FARMETTES

WITH NO ELECTRICITY OR TELEPHONE LINES, THESE WHITE FARM HOUSES SIT ON 3 ACRES OF LAND WHICH USUALLY INCLUDE GRAZING PASTURES FOR HORSES AND A LARGE GARDEN. MANY AMISH MEN WORK IN NAPPANEE AREA FACTORIES.

8. SOUTH UNION CEMETERY AND CHURCH

SEVERAL CIVIL WAR VETERANS ARE BURIED HERE.

9. SHINGLE SHOPPES

ALONG THIS ROUTE YOU CAN FIND AMISH-OWNED BUSINESSES SPECIALIZING IN:

- GLASS ENGRAVING
- WOODWORKING
- UPHOLSTERY
- QUILTING

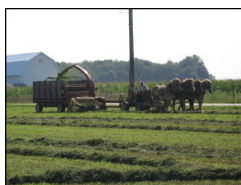


10. MINT STILL

NORTH CENTRAL INDIANA IS KNOWN FOR ITS PRODUCTION OF SPEARMINT AND PEPPERMINT.

11. AMISH SCHOOL & PLAYGROUND

THIS BUILDING IS A ONE-ROOM SCHOOL-HOUSE FOR GRADES 1ST THROUGH 8TH.



12. LARGE AMISH FARMS

USING ONLY THE POWER OF HORSES, THESE FARMS ARE PASSED FROM GENERATION TO GENERATION. MANY FARMS INCLUDE A GROSSDAADI HAUS (GRANDPA HOUSE) ENABLING GRANDPARENTS TO LIVE ALONGSIDE THE REST OF THEIR FAMILY.

13. AYR CABINET

AYR CABINET SPOTLIGHTS FINE CUSTOM CABINETRY BUILT BY AMISH CRAFTSMEN FOR OVER 30 YEARS. BE SURE TO VISIT THEIR FINE SHOWROOM.

14. MILLER STOVE & FIREPLACE

MILLER'S SPECIALIZES IN WOOD, COAL, GAS AND PELLET STOVES AND INSETS. THEY ALSO SELL WOOD AND GAS FIREPLACES BUILT TO CREATE MORE THAN JUST HEAT.

15. SHINGLE SHOPPES

SHOPPES INCLUDE:

- BIKE SHOP
- COUNTRY STORE
- BIRDHOUSES
- HARNESS SHOP



16. COUNTRYHOME FURNITURE

COUNTRYHOME FURNITURE'S QUALITY HANDCRAFTED OAK AND CHERRY FURNITURE WILL BE YOUR FAMILY HEIRLOOMS IN YEARS TO COME.

17. BORKHOLDER DUTCH VILLAGE

A UNIQUE SHOPPING EXPERIENCE THAT INCLUDES GIFTS, CRAFTS, COLLECTIBLES, AND ANTIQUES.

18. MARY'S OLD FASHIONED PASTRIES

COME AND ENJOY DELICIOUS HOMEMADE SOUPS, SANDWICHES, PASTRIES, AND COFFEES. FRESH OUT OF THE OVEN!!

19. NEWMAR

NEWMAR OFFERS TOP OF THE LINE RECREATIONAL VEHICLE PRODUCTS WHILE MAINTAINING THE HIGHEST STANDARD OF QUALITY, SERVICE, AND DEVOTION TO ITS CUSTOMERS. ENJOY A COMPANY TOUR AT EITHER 10AM OR 1 PM.

20. AMISH ACRES

STOP AND EXPERIENCE THE LIFESTYLE OF THE AMISH THROUGH GUIDED TOURS, THRESHERS DINNER, MUSICAL THEATRE, DEMONSTRATIONS AND QUIANT SHOPS ON THE NATIONALLY RECOGNIZED 80 ACRES HISTORIC FARM.

21. HOMESTYLE FURNITURE

HOMESTYLE FURNITURE IS THE HOME OF HANDCRAFTED SOLID WOOD FURNITURE AND CRAFTS. VISIT A SHOWROOM THAT CAPTURES THAT "HOMESTYLE" FEELING WITH EVERYTHING FROM ENTERTAINMENT CENTERS TO BEDROOM SUITES AND A VARIETY OF SMALL ITEMS: LAZY SUSANS, BREADBOXES AND WOODEN TOYS.

